

KEY FACTS



# STENTON TOWNHOUSE



## Things you need to do before you arrive

1. Read your student residence agreement [here](#).
2. Complete your compulsory induction via the accommodation portal.
3. Book your arrival slot.
4. Read the *Halls A-Z handbook*.
5. Visit **Welcome to the University of Reading**.

## Need to get in touch?

[accommodationonline@reading.ac.uk](mailto:accommodationonline@reading.ac.uk)

0118 200 5011

+44 118 200 5011 (international)

.....  
View more images on our flickr [here](#)

## KEY FACTS

# STENTON TOWNHOUSE

### Hall address

Your name, flat, block  
Stenton Townhouse, Shinfield Road, Reading  
RG6 6JL (Lambourne)  
RG6 6JN (Newington)  
RG6 6JE (Oakley)

Stenton Townhouses are part of Stenton Hall within Park Group.

### Reception

Reception is on the ground floor of Windsor Hall.

### Post

Postboxes are on the outside wall of Park Lounge.  
Collect parcels and registered mail from Park Reception between 08:30–09:30 and 14:00–18:30.

### Lift access

No. Rooms arranged over four floors.

### Social facilities

Park Lounge room contains a TV screen and pool table.  
Located opposite Park Eat. Allocated study space is Ipsden Study Space.

### Special requirements

Single-sex and Quieter Lifestyle areas are not available in this accommodation.

### Meal Plan?

**The University recommends all first year students enrol onto a Meal Plan.** If you haven't already, you can enrol onto a fixed price Meal Plan, ranging from 3 to 21 meals per week, by visiting [www.reading.ac.uk/clevercuisine](http://www.reading.ac.uk/clevercuisine). The closest catering outlet is Park Eat.

### Your kitchen

Each Kitchen is equipped with a fridge/freezer, kettles, toasters, microwave, hobs and ovens and is shared between twelve residents. Each resident has one fridge and freezer shelf and two cupboards.

### Do I need induction pans?

**Yes.** Stenton Townhouse has induction hobs. You need a particular type of pan called 'Induction pans'. We suggest stainless steel flat bottom pans. If purchasing a kitchen pack, please select 'induction hob kitchen pack'.

### Walking distance

9 minutes to central Whiteknights Campus.

### Nearest public transport

UoR Chancellor's Way: 5 minutes  
Bus: 21 or 21a

### Bed size

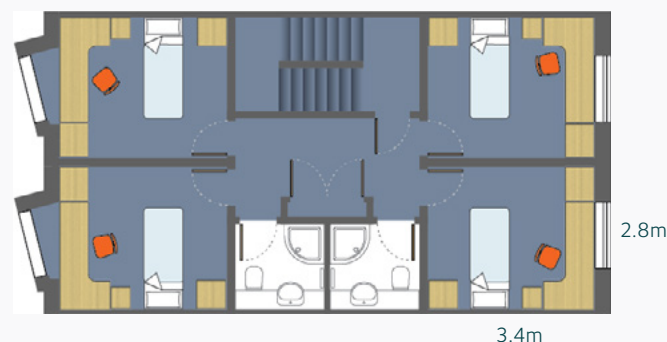
- Townhouse:  
small double, 4'0"x6'3" (122cm x 190.5cm)

Each room contains bed, desk, chair, shelves, curtains, wardrobe and rubbish bin. There is also storage under the bed.

Bedding packs and mattress toppers are available to purchase online or from your local reception.

**Bathrooms** are unisex and have a toilet, sink, washbasin and shower with an enclosed door and adjustable showerhead. They also have a shaver/toothbrush socket.

### Example townhouse floorplan



Not to scale. Room measurements are approximate only. This is not the guaranteed size of your room. Approximate room size = 9.5m<sup>2</sup>.

### Need to get in touch?

[accommodationonline@reading.ac.uk](mailto:accommodationonline@reading.ac.uk)

0118 200 5011

+44 118 200 5011 (international)

View more images on our flickr [here](#)