

2025–26



HOME FROM HOME ACCOMMODATION



University of
Reading



4982

student bedrooms
on or close to campus

89%

of students would recommend
their hall to other students*

* UPP Reading Customer Satisfaction Survey,
2023-24

5

eating outlets to choose from
as part of the meal plan
package

24/7

Halls Hotline to deal with any
halls-related issues quickly
and efficiently

All halls no more than

15

minutes walk from the
nearest campus

0

No unexpected bills to pay
with our all-inclusive rent †

† Includes utility bills, basic contents insurance
and communal cleaning

includes high-speed

WI-FI

150+

number of free events
provided to residents last
year as part of Home at Halls
residence life programme

Available on both iOS and Android platforms
our Home at Halls app is dedicated to
improving your student experience



WELCOME TO THE UNIVERSITY OF READING

We're delighted that you're interested in finding out more about accommodation at the University of Reading.

We work closely with UPP, our accommodation partner, to offer a fantastic university living experience that provides a great opportunity to make new friends and play a part in creating some of your best university memories.

If you have any queries about the information within this guide our expert staff within the Accommodation Office will be more than happy to assist in finding your new home away from home.

Martin Batt, Director of Campus Commerce



LIVING IN HALLS

Why live in halls?

University accommodation provides a safe and secure environment for residents to live, study, meet friends and socialise as part of a supportive community.

Great location

All accommodation is located either on the main Whiteknights campus or within a 15-minute walk.

A range of accommodation choices to suit your needs

Express a preference for self-catered rooms – with or without a Meal Plan – or Meal Plan halls with a licence length to suit your needs from our wide variety of room types for various budgets.

Do you have a special requirement due to a medical condition? Do you want to live in a same sex flat or a quieter lifestyle flat? We have accommodation to suit all needs!

All inclusive rent

Including:

- all utility bills
- Wi-Fi
- a basic level of contents insurance
- maintenance
- communal cleaning, including communal kitchen areas and shared bathroom facilities



Benyon



Greenow and McCombie



Bridges Hall



St George's Hall: Oakhurst kitchen



Outside the Library

Low deposit

An amount of £250 is payable to accept your offer of accommodation. Your offer **cannot** be accepted without payment of this amount.

Safe and secure

The halls have regular security patrols and CCTV is constantly monitored. Each group of halls has a staffed reception.

Community

Home at Halls is our residence life programme with a team dedicated to organising free and low-cost events for everyone living in halls at the University of Reading. Our activities involve cultural experiences, fitness and well-being, life skills, seasonal celebrations and so much more! We welcome students of all ages to participate, meet new people, and make the most of living within the University's community.



Bridges Hall

Welfare support

A dedicated and experienced team of on-site staff wardens and hall mentors take care of all aspects of pastoral care.

Quieter lifestyle

We allocate students together who consider themselves to have a 'quieter lifestyle'. If you prefer a quieter lifestyle, please select a 'quiet' room type in your application. Please note, we cannot guarantee a permanent quiet environment. Communal living will always involve some level of noise, including from outside the building. However, by placing students requesting a quieter lifestyle together we hope to better meet the different expectations of our students.

24/7 Halls Hotline and Home at Halls app

Available 24 hours a day, 365 days of the year ensuring any halls-related issues are dealt with quickly and efficiently.

This service is complemented by our handy Home at Halls app where you can report maintenance, give feedback, register for Home at Halls events and receive important updates.

Social spaces and study areas

All Hall Groups have access to a shared social space. We also have a number of study spaces within halls. Halls without study areas are able to access the closest hall's study area. For example, residents of Bridges Hall are able to use the study space within Wessex Hall.

CHOOSING YOUR ACCOMMODATION

THINGS TO CONSIDER

Step 1: Your preferred room type

When thinking about your room type, there are a few different factors to consider. For example, are you happy to share a bathroom? Your budget will play a big part and needs careful consideration. You need to make at least five choices of preferred accommodation. The more preferences you pick, the more likely we will be able to meet your requirements. Due to demand we may not always be able to meet your first preference.

Step 2: Meal Plan or self-catered?

The University recommends all first-year students have a Meal Plan to ease the transition into university life. Please note some rooms include a minimum mandatory Meal Plan. If you have selected a self-catered room, you should choose a Meal Plan at this stage to fit your lifestyle. To make your choice visit www.reading.ac.uk/clevercuisine.

Step 3: Preferred licence length?

We have different licence lengths available for full year and shorter periods of study, with entry points in September and January. Full-time students have the choice of the following licence lengths (not all licence lengths are available in each hall):

- **40 weeks (Sept to June):** This is the most popular option for undergraduate students and postgraduates who are not required to be in Reading for their course over the Summer vacation. Please note that some rooms available at **St George's, Benyon, and Sherfield halls** are on 39 weeks.
- **51 weeks (Sept to Sept):** Postgraduate students often select this option but it is also suitable for any undergraduates who would like to use their room over the summer vacation. You are advised to check with your course to see which licence length will be most appropriate for you. If you are in doubt please check.

Accommodation guarantee: A new **full-time undergraduate** who holds Reading as a firm UCAS choice **and** applies for accommodation by 1 August is guaranteed a place in halls.

Step 4: Specific requirements

When making your application, you have the opportunity to note any specific requirements. This includes single-sex accommodation, living in a 'quieter lifestyle' area and any medical conditions such as needing a wheelchair accessible room, or other conditions which may affect your time in halls including physical disability, hidden disability and neurodiversity. Please ensure you complete this part of the application accurately to ensure we match your requirements as closely as possible.



APPLYING FOR ACCOMMODATION

APPLICATION TIMELINE



Postgraduate students

There are a range of accommodation options available for postgraduate students. We do not offer dedicated postgraduate halls but we do our best to allocate you in areas sharing with other postgraduate or more mature students where possible. Our 51-week licence option is often popular with postgraduate students, although you should check with your school to find out if you will need to be on campus over the summer vacation for your particular course.

When you make an application you will need to follow the Postgraduate pathway by selecting the postgraduate option under 'New Students'. For more information about families, couples and mature student accommodation visit www.reading.ac.uk/ready-to-study/accommodation/room-types/flats-self-contained-rooms.

Scan to view
the full
application
timeline



ACCOMMODATION LICENCE 2025–26

Payment and deposit

You will need to pay a deposit of £250 to accept your offer of accommodation. Payments are applied termly and align with most students loan payment dates. Specific payments and their due dates can be viewed on your accommodation offer via the [RISIS web portal](#).

Licence dates

You will find your licence start date in your accommodation offer via the [RISIS web portal](#). Start dates are specific to each hall of residence, as an indication.

- Licence start date: 19 September 2025, ends 26 June 2026 (40 weeks) or 11 September 2026 (51 weeks)
- Licence start date: 20 September 2025, ends 27 June 2026 (40 weeks) or 12 September 2026 (51 weeks)
- Licence start date: 21 September 2025, ends 28 June 2026 (40 weeks) or 13 September 2026 (51 weeks)

Meal Plans

Meal Plans selected during the Accommodation Application process form part of your Accommodation Licence and are also governed by the Meal Plan Terms and Conditions found here www.clever-cuisine.com/terms/. Please ensure you read and fully understand the terms of the meal plan you are signing up to.

You can find more about how each Meal Plan works, including dates they run, at www.clever-cuisine.com



Scan to view
the RISIS
web portal



Frequently
asked questions
Scan to view

CLEVER CUISINE

The home of our innovative meal plan system

The university recommends all first-year students have a meal plan to ease the transition into university life.

Offering a wide range of dishes from across the world, our professional team of chefs ensure that our menus are well balanced and provide a healthy, nutritious diet with plenty of options to suit all requirements. With five conveniently placed dining halls you have the freedom to dine anywhere and at any time.

Our Meal Plans offer much more than a place to eat. The dining halls are full of life and bring students together to forge friendships and become part of a community.



90% of students said that having a meal plan helped them settle into university and 75% said it had a positive impact on their university experience. To find out more visit www.reading.ac.uk/clevercuisine

How do I buy a plan?

The easiest way to select your meal plan is during the halls application process. The plan is then billed with your hall fees. Please note some rooms include a minimum mandatory meal plan. Alternatively, you can purchase your meal plan online at www.reading.ac.uk/clevercuisine



ROOM TYPE OPTIONS

PREMIUM EN-SUITE AND EN-SUITE ROOMS

Our **premium en-suite rooms** offer a high standard of accommodation in modern, well-appointed buildings. Premium en-suite rooms include a 4-foot-wide bed, en-suite shower room and fitted furniture. All premium en-suites are self-catered rooms.

Halls with premium en-suite rooms are:

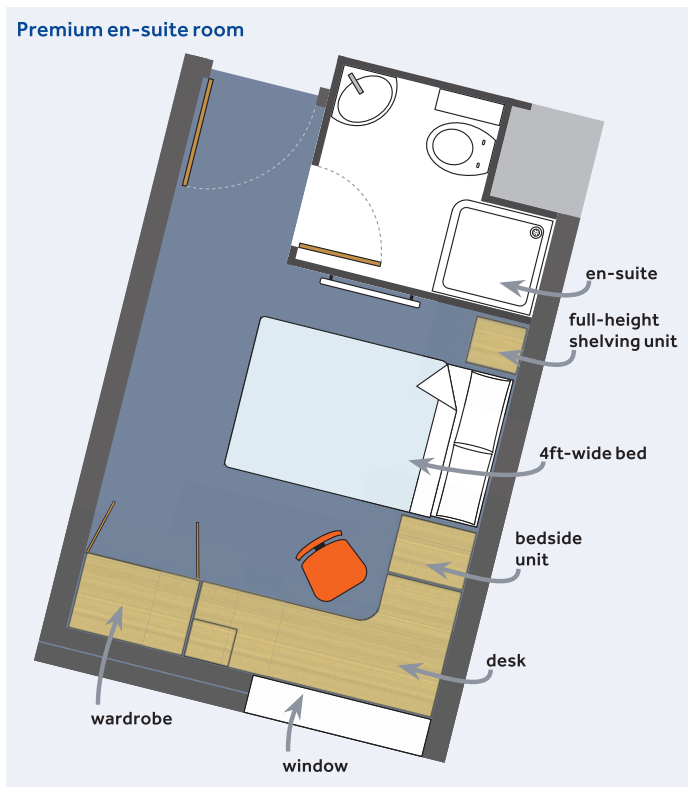
Benyon, Bridges, Childs, Mackinder, and Stenton.

Our **en-suite rooms** offer a comfortable, well-equipped bedroom with fitted furniture, shelving units and an en-suite shower room, often in a 'wet room' style. En-suite rooms are available in both self-catered and Meal Plan halls.

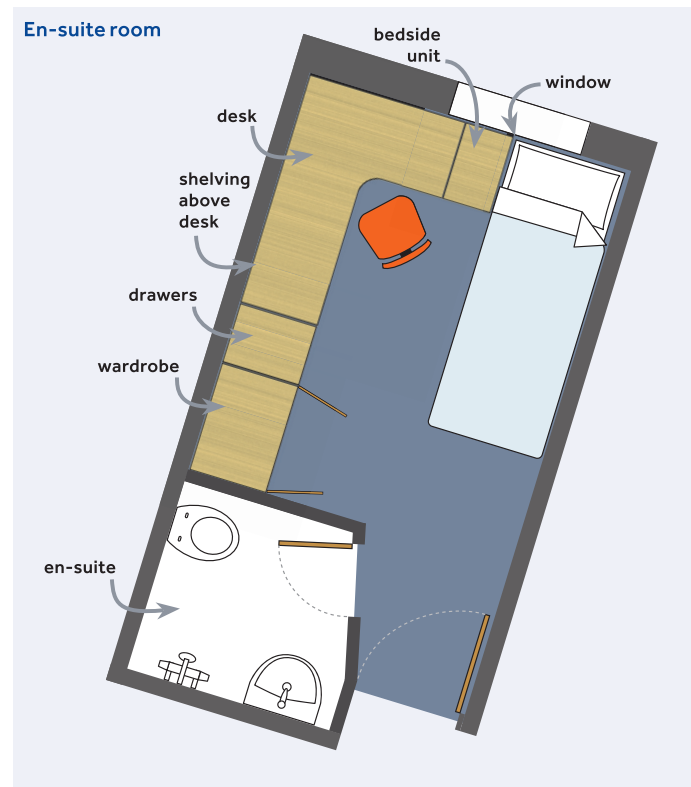
Halls with en-suite rooms are:

Benyon, Dunsden Crescent, Greenow and McCombie, Sherfield and St George's.

Premium en-suite room



En-suite room



Take a virtual tour of one of our rooms here



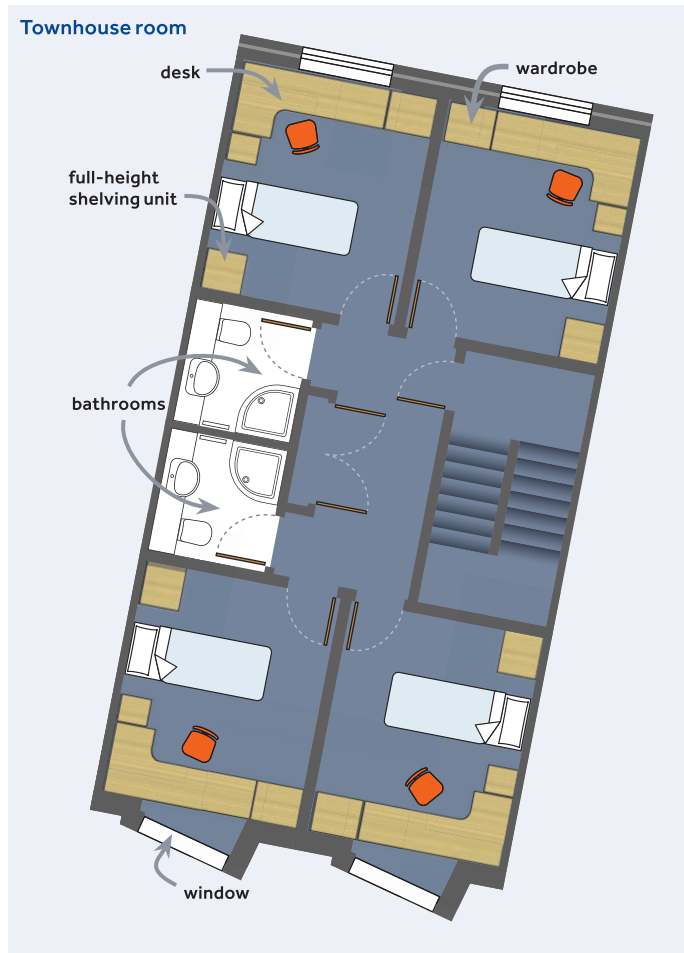
Room dimensions are available in the *Key Fact Sheet* found on the room type specific accommodation webpages here www.reading.ac.uk/ready-to-study/accommodation

TOWNHOUSE AND PREMIUM SHARED BATHROOM

Our **townhouse rooms** are arranged in modern, self-catered houses with 12 bedrooms arranged over three floors. Four bedrooms on each floor share two bathrooms. **Bridges Townhouses** have longer than standard single beds and **Stenton Townhouses** have 4-foot-wide beds.

Townhouses are:

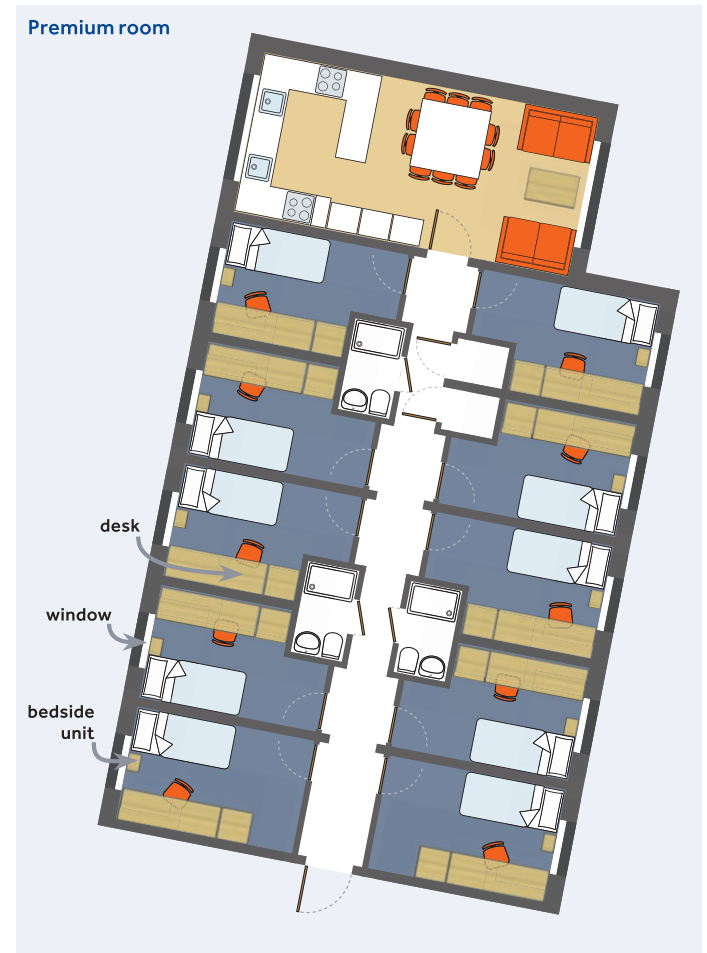
Bridges and Stenton.



Our **premium rooms** with shared bathroom facilities have ten bedrooms which share three bathrooms. These flats have a modern kitchen, dining room and living area and are self-catered.

Halls with premium rooms (shared bathrooms) are:

Bridges.



UPGRADED AND STANDARD ROOM WITH SHARED BATHROOM FACILITIES

There are a range of halls offering shared bathroom facilities; many include a washbasin within the room.

At **St George's and Wessex halls**, all the rooms have washbasins, have been upgraded and are self-catered. Kitchen facilities are shared with other residents in a traditional corridor-style arrangement.

Wantage and Windsor halls are Meal Plan halls. **Wantage Hall** has both standard and upgraded rooms, with or without a washbasin. At **Windsor Hall**, all rooms have been upgraded and there are rooms with either a single or 4-foot-wide bed, with or without a washbasin.

Halls with upgraded and standard (shared bathrooms) rooms are: Northcourt houses, Sherfield, St George's, St Patrick's, Wantage, Wessex and Windsor.

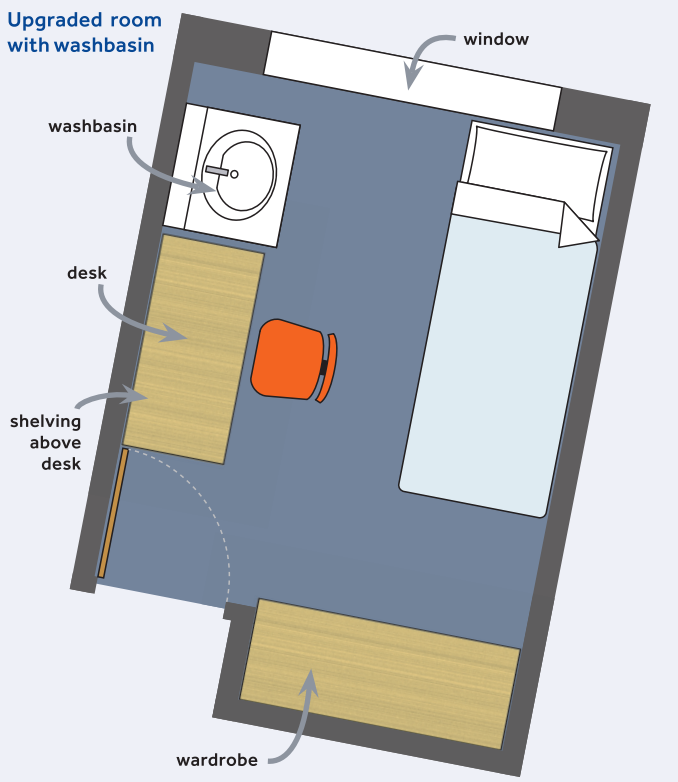


Wessex Hall: upgraded washbasin room



Wantage Hall

Upgraded room with washbasin



SUMMARY PAGE

Room type	Benyon Hall	Bridges Hall	Childs Hall	Creighton	Dunsden Crescent	Greenow & McCombie	Mackinder Hall	Northcourt Houses	Sherfield Hall	St George's Hall	St Patrick's Hall	Stenton Hall	Wantage Hall	Wessex Hall	Windsor Hall
SPECIFIC REQUIREMENTS															
Quieter Lifestyle: Quieter lifestyle areas available in Sherfield and St George's halls whilst Childs Hall is a designated Quieter Lifestyle hall			QL						QL	QL					
Single-sex accommodation available within these halls	SS	SS	SS				SS		SS	SS		SS			
Lifts		✓	✓				✓			✓		✓			✓



Sherfield Hall: en-suite room

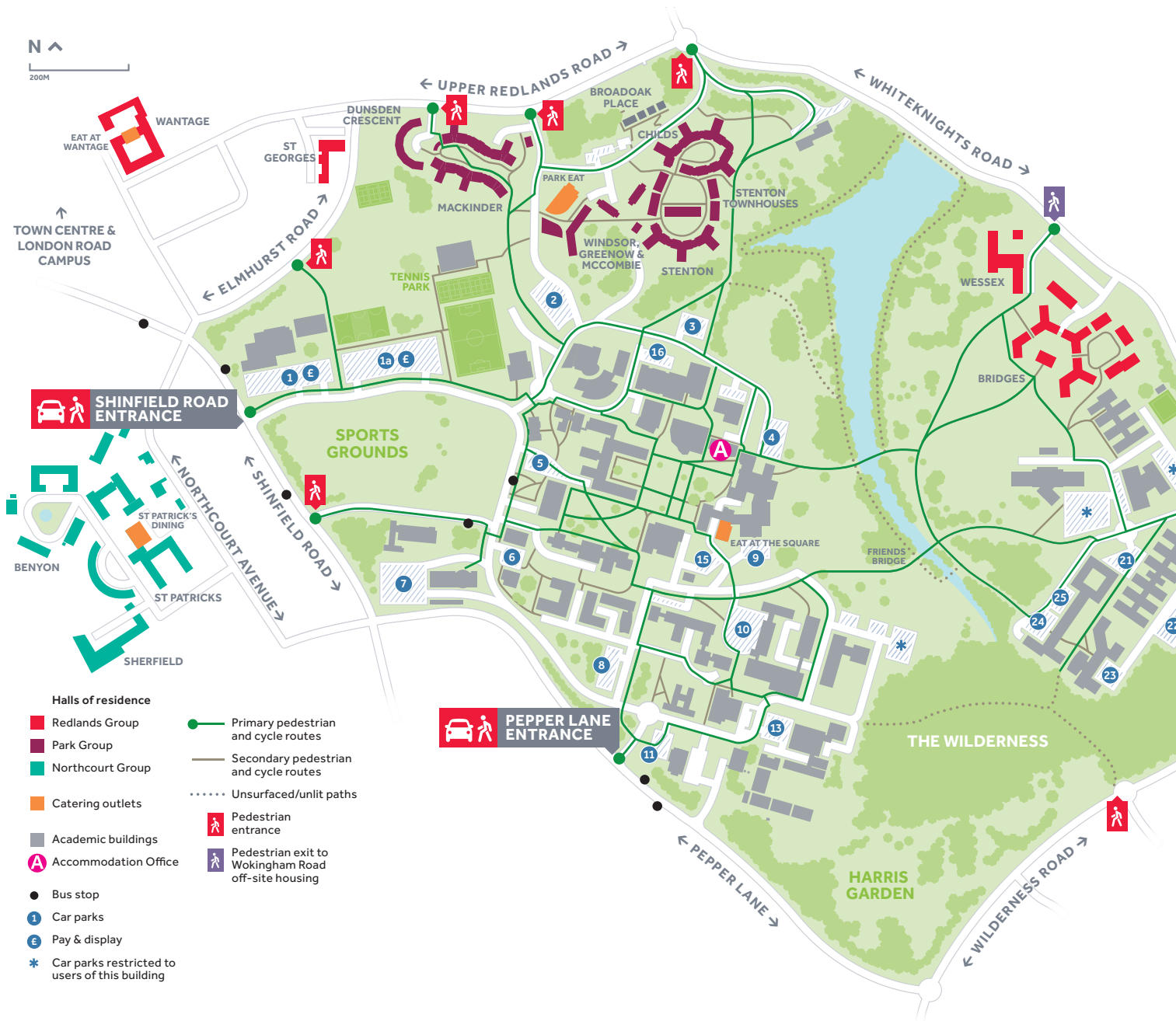


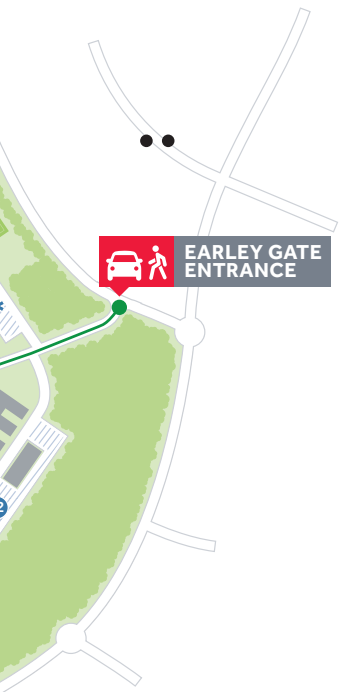
Stenton Hall

Frequently
asked
questions
Scan to view



HALL LOCATIONS WHITEKNIGHTS CAMPUS





 EARLEY GATE ENTRANCE



Wantage Hall



Fickling Court/Benyon Hall



Apply here
via the RISIS
web portal

ACCOMMODATION GUIDE 2025–26

i For more information, please contact:

Accommodation Office

Carrington Building
University of Reading
Whiteknights
Reading RG6 6UA
United Kingdom

accommodationonline@reading.ac.uk

Tel +44 (0)118 200 5011

www.reading.ac.uk/ready-to-study/accommodation/

Please note

All photos are examples of facilities on offer and individual rooms may vary. Whilst every effort has been made to ensure that the details outlined in this booklet are correct at the time of publication, some arrangements may be subject to change.

All publications are available in a digital format upon request. For more information, please contact the Accommodation Office.



The University of Reading is committed to providing quality student accommodation and fully complies with the Student Accommodation Code. See www.thesac.org.uk for more details. The code covers, among other matters, health and safety, maintenance and repair, and relationships between the University and student tenants. It outlines best practice and provides benchmarks for the management – and quality – of student housing in the sector.